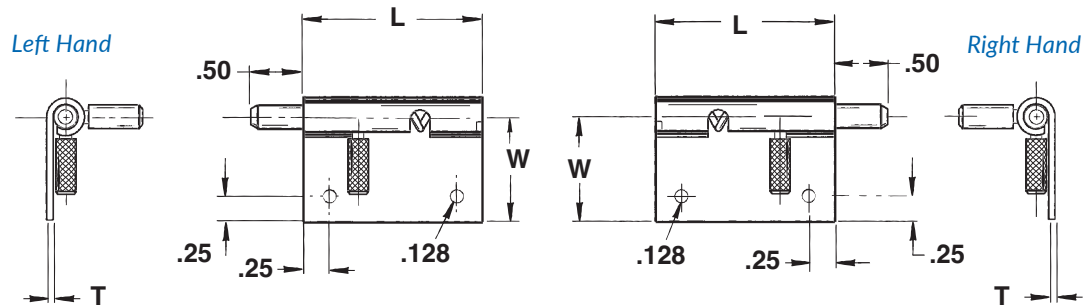
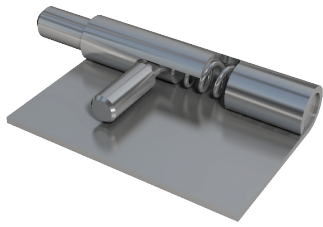


Spring Release Hinge Series 701



Combining a hinge and a latch in a standard piece of hardware.

The 701 Series Spring Release Latch has a single handle, which pulls toward the center to release the body or door from the keeper. This relies on an engagement hole or slot in the adjoining surface. Installation is simple and inexpensive using screws, rivets or by welding.

All styles are manufactured to close tolerances. End play and side play are held to a minimum, ensuring a precision fit and smooth operation.

This latch is ideally suited for a variety of applications including aircraft compartments, computer equipment, shelving and storage units and medical equipment.

BODY

	Standard	Special
L Length	1.75	-
W Width	1.00	-
T Thickness	.050	-
DASH #	-1	-7

PIN

	Standard	Special
P Pin Diameter	.250	-
DASH #	-1	-7

HOLES

	None	Standard (2 Holes)	Special
DASH #	-0	-1	-7

MATERIAL

	Aluminum	Steel	Stainless
DASH #	-1	-2	-3

MODEL

Right (R) Left (L)

FINISH

Most commercial finishes are available including zinc plate on steel, passivate and electropolishing on stainless steel, and anodize on aluminum.

ORDERING INFORMATION

Sample Part

