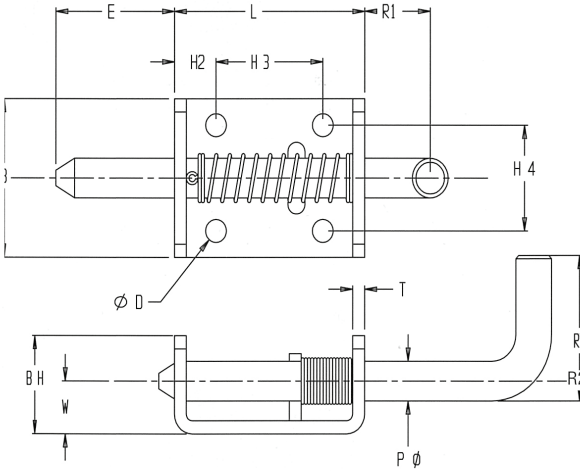


Spring Latch Series 785



Paneloc heavy-duty spring latches are available in 3/8" and 1/2" pin diameters. These large, rugged latches are available in steel or stainless steel and have a closed knuckle for added durability and strength.

PIN

P	Pin Diameter	.375	
*	E	Extension	1.25
	R1	Handle Extension	.69
	R2	Handle Extension	1.38

BODY

P	Height	1.50	
L	Length	2.00	
	Material Thickness	.69	
W	Width	.500	
BH	Body Height	.94	
H2	Hole Location	.440	
H3	Between Centers	1.125	
H4	Between Centers	1.00	
*	D	Hole Diameter	.218

MATERIALS

Steel: 304/303 SS

FINISH

Most commercial finishes are available, including zinc and cadmium on steel, passivate and electropolishing on stainless steel.

ORDERING INFORMATION

Sample Part #
785 - S - Zinc

Basic Part No. _____
Material C = Stainless Steel
S = Steel

Finish - Zinc
- Passivate
- Other