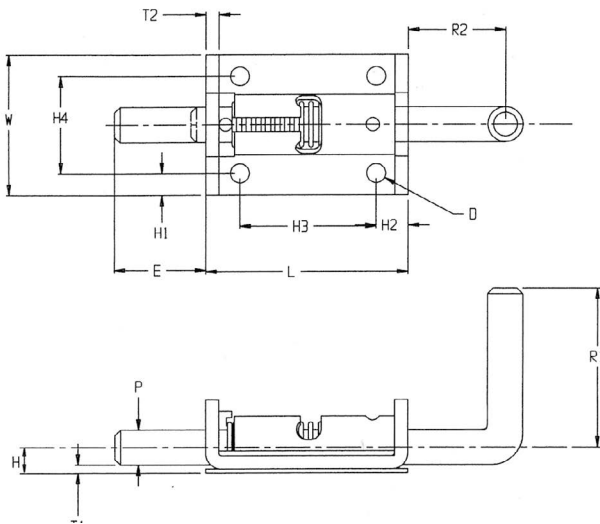


Heavy Duty Lock Latch Series 779

Design locks open and locks closed



The Paneloc 779 Series spring latch features a 1/2" pin diameter and a closed knuckle for added durability and strength.

A unique feature of this part is its cover plate which enables the latch to lock open or lock closed.

PIN

P	Pin Diameter	.500
*	E Extension	1.312

BODY

*	L Length	2.88
	W Width	2.00
	T1 Thickness	.120
	T2 Thickness	.140
	R1 Handle Lenth	2.25
	R2 Handle Extension	1.38
	H Height	.375
	H1 Hole Location	.31
	H2 Hole Location	.450
	H3 Hole Location	1.937
	H4 Hole Location	1.380
*	D Hole Diameter	.270

MATERIAL

Designation: C = Stainless S = Steel

FINISH

Most commercial finishes are available, including zinc plate on steel, and passivate or electropolishing on stainless steel.

ORDERING INFORMATION

