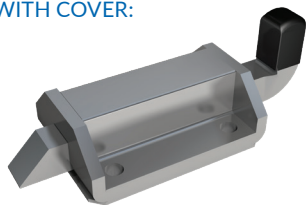


# Slam Latches

## 707-709 Series

STANDARD VERSION  
WITH COVER:

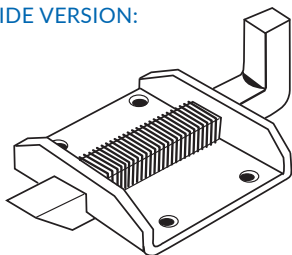


These rugged slam latches are ideal for applications that require a quick and effortless locking mechanism, such as truck and trailer doors, drawers and tailgates, as well as medical and farm equipment.

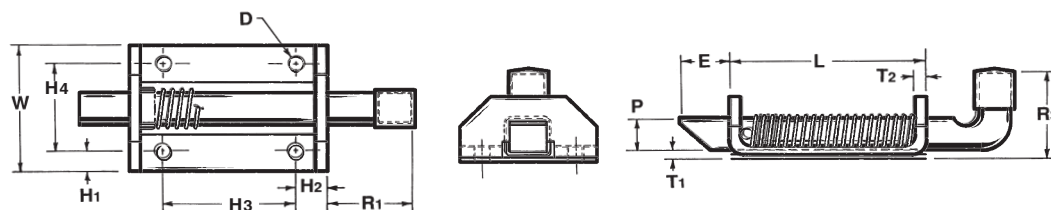
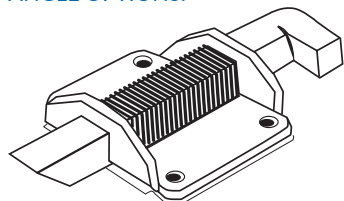
To engage simply "slam" the door shut. The spring-loaded pin is square with an angled edge that smoothly retracts as it engages with the keeper and then extends back into place in a locked position. To release, grip the handle and pull back.

Available in 3 sizes: 7/16", 3/8" and 1/2" pins

WIDE VERSION:



MULTIPLE HANDLE  
ANGLE OPTIONS:



SLAM-LATCH PART NUMBERS		707	708	708W	709	709W
PIN						
P	Pin Size	.375	.437	.437	.500	.500
* E	Extension	.562	.750	.750	.750	.750
R1	Handle Length	.812	1.000	1.00	1.250	1.25
R3	Handle Extension	1.000	1.250	1.25	1.375	1.38
BODY						
L	Length	1.500	2.000	2.00	2.875	2.875
* W	Width	1.250	1.625	2.19	2.000	2.66
T1	Thickness	.090	.125	.125	.190	.190
T2	Thickness	.090	.120	.125	.190	.187
* H1	Hole Location	.187	.250	.250	.312	.300
* H2	Hole Location	.375	.375	.38	.468	.47
H3	Hole Location	.750	1.250	1.250	1.937	1.937
H4	Hole Location	.875	1.125	1.687	1.375	2.060
* D	Hole Diameter	.171	.203	.203	.265	.265

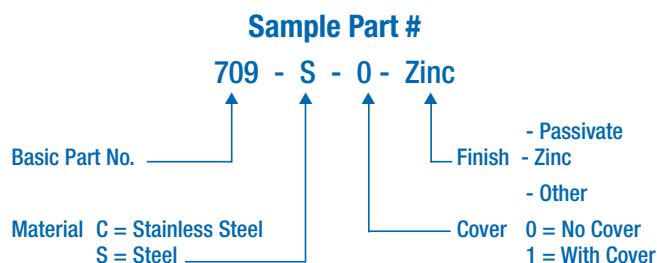
### MATERIAL

Designation: C = Stainless S = Steel

### FINISH

Most commercial finishes are available, including zinc plate on steel, passivate and electropolishing on stainless steel.

### ORDERING INFORMATION



Special forms, offsets, hole sizes or welding projections are available to your specifications.

\*Designates dimensions that can be altered to meet your specifications.