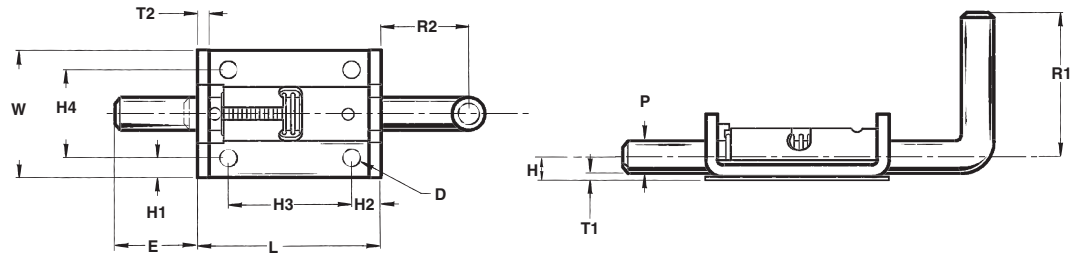
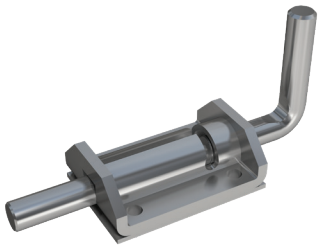


# Heavy Duty Lock Latch Series 779

Design locks open and locks closed



The Paneloc 779 Series Spring Latch features a ½" pin diameter and a closed knuckle for added durability and strength.

A unique feature of this part is its cover plate which enables the latch to lock open or lock closed.

PIN			BODY			
P	Pin Diameter	.500	*	L	Length	2.88
*	E	Extension		W	Width	2.00
				T1	Thickness	.120
				T2	Thickness	.140
				R1	Handle Lenth	2.25
				R2	Handle Extension	1.38
				H	Height	.375
				H1	Hole Location	.310
				H2	Hole Location	.450
				H3	Hole Location	1.937
				H4	Hole Location	1.380
			*	D	Hole Diameter	.270

## MATERIAL

Designation: C = Stainless S = Steel

## FINISH

Most commercial finishes are available, including zinc plate on steel, and passivate or electropolishing on stainless steel.

## ORDERING INFORMATION

