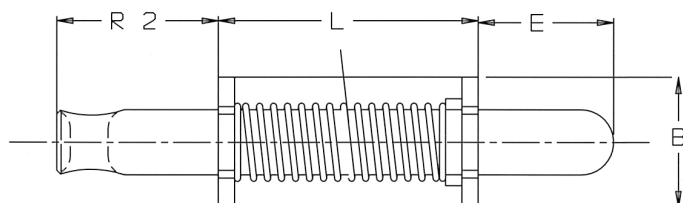
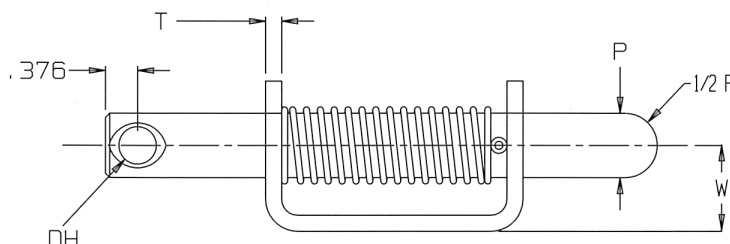


Heavy Duty Spring Latch Series 784



Paneloc heavy-duty spring latches are available in 3/8" and 1/2" pin diameters. These large, rugged latches are available in steel or stainless steel and have a closed knuckle for added durability and strength.



PIN PULL BACK DISTANCE=1.30"
SPRING PRESSURE @ 1.00"=8 LBS

PIN

P	Pin Diameter	.750
* E	Extension	1.56
R2	Handle Extension	1.87
DH	Handle Hole	.437

BODY

B	Height	1.50
L	Length	3.00
W	Width	1.00
T	Material Thickness	.187

MATERIALS

Steel

FINISH

No finish, zinc plate

ORDERING INFORMATION

Sample Part #		
Basic Part No.	785 - S - Zinc	
Material	C = Stainless Steel S = Steel	
		Finish - Passivate - Zinc - Other