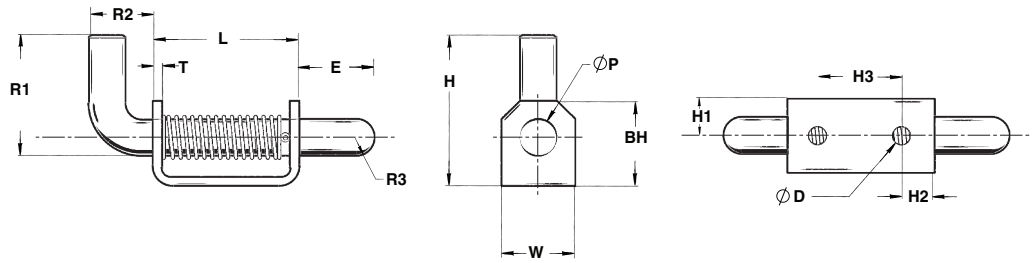
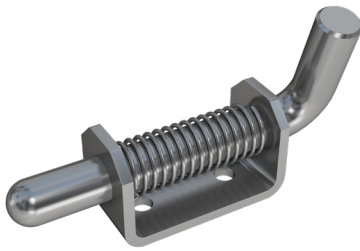


Heavy Duty Spring Latch Series 784



The 784 Series Spring Latch is one of the strongest, most heavy-duty latches in Paneloc's product line, with a 3/4" pin and closed knuckle for added durability and strength.

This part is available with a cable-ready pin or handle. The 784 is available with two holes, pem studs or in a no-hole version for welding. It is ideally suited for truck and trailer bodies and railcars.

PIN			BODY			
P	Pin Diameter	.750	W	Width	1.50	
*	E	Extension	1.56	BH	Body Height	1.75
	R2	Handle Extension	1.87	L	Length	3.00
	DH	Handle Hole	.437	H	Height	1.00
			T	Material Thickness	.187	

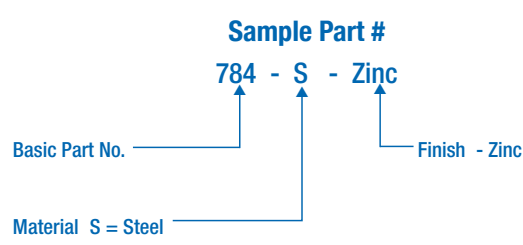
MATERIAL

Designation	S = Steel
-------------	-----------

FINISH

Available in plain steel, or with zinc plating.

ORDERING INFORMATION



*Please specify hole and handle requirements when placing order.