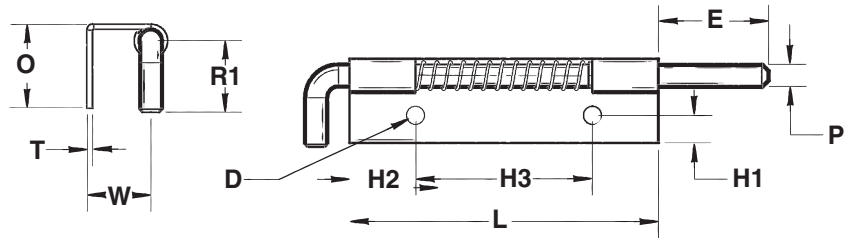
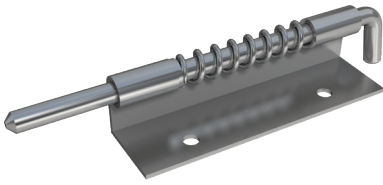


# Spring Latch Series 716



In addition to the standard version, the Series 716 Spring Latch can be ordered with a special feature that differentiates it from our other latches—an additional 90 degree form on the body.

This unique design elevates the pin so that it's no longer flush to the body, making it an ideal choice for installations in hard-to-reach locations, such as inset windows, doors and recessed panels.

Custom hole patterns or body heights can be requested to suit your needs.

PIN			BODY		
P	Pin Diameter	.250	L	Length	3.50
* E	Extension	1.250	* W	Width A (Height)	.720
* R1	Handle Length	.810	O	Base Width	.950
			T	Thickness	.060
			* H1	Hole Location	.310
			* H2	Hole Location	.750
			H3	Hole Location	2.00
			D	Hole Diameter	.203(2H)

## MATERIAL

	Steel (S)	Stainless (C)	Aluminum (A)
Pin Type	1215	303	SS
Body	1010	304	5052
Spring	302	302	302
C-Ring	PH15-7MO	PH15-7MO	PH15-7MO

## FINISH

Most commercial finishes are available, including zinc plate on steel, passivate and electropolishing on stainless steel, and anodize on aluminum.

## POINT STYLE

Other styles available including long extensions

1		2		3		4		5	
	90° Cone		Ball		Bullet		Flat		60° Cone

## Sample Part #

716 - C L A 1 - 2H - Electropolish

Basic Part No.	716	Material (Stainless Steel)	C	Model (Left Hand)	L	Width A	A	2 Holes	2H	Finish	Electropolish	Point Style (90° Cone)	1
----------------	-----	----------------------------	---	-------------------	---	---------	---	---------	----	--------	---------------	------------------------	---

\*Designates dimensions that can be altered to meet your specifications.