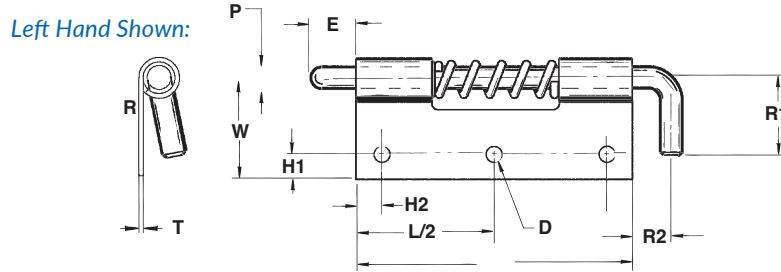
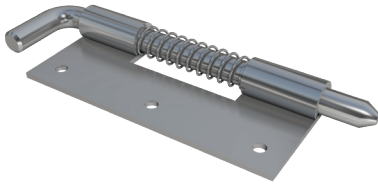


# PANELOC Spring Latch Series

## Design Specifications



### The Spring Latch Difference

Paneloc's spring-loaded latches are a reliable, high quality solution for applications where both secure closure and easy access are required. Primarily used on hinged doors and panels, the simple barrel bolt design has many practical uses throughout the electronic cabinet and industrial equipment industries, including inspection doors and access panels.

Paneloc offers an extensive selection of high quality materials, widths, hole patterns, forms and pin styles to choose from. Easy and inexpensive installation can be accomplished using screws, rivets, or by welding. A unique design feature of Paneloc's latches is a special C-Ring that acts as a positive-stop retainer, preventing spring over-travel or snagging. The C-Ring also provides secure pin retention and eliminates jamming. The tempered spring is properly tensioned to provide smooth positive pin release and return.

PART NUMBER	711	712	713	714	715	716	718	723
-------------	-----	-----	-----	-----	-----	-----	-----	-----

PIN								
P Pin Diameter	.125	.156	.187	.250	.187 SQ	.250	.375	.250
* E Extension	.187	.250	.375	.500	.250	1.250	1.00	.625
* R1 Handle Length	.437	.625	.687	.812	.750	.810	1.50	.812
* R2 Handle Extension	.187	.250	.312	.375	.875	.380	1.50	.430

BODY								
L Length	.875	1.375	2.000	2.75	.875	3.50	4.00	2.75
* W Width A	.375	.500	.625	.75	.500	.720	1.50	.955
Width B	.500	.750	.875	1.000	-	-	-	-
T Thickness	.040	.040	.050	.060	.050	.060	.080	.090
* H1 Hole Location	.156	.187	.187	.250	.181	.281	.620	.400
* H2 Hole Location	.156	.187	.250	.250	.156	.750	.750	.375
* D Hole Diameter	.128(2H)	.128(2H)	.128(3H)	.128(3H)	.161(2H)	.203(2H)	.344(2H)	.191(3H)

MATERIAL	Steel	Stainless Steel	Aluminum
Designation	S	C	A
Pin Type	1215	303	SS
Body	1010	304	5052
Spring	302	302	302
C-Ring	PH15-7 MO	PH15-7 MO	PH15-7 MO

\*All springs and c-rings are made with stainless steel.

MODEL	R = Right Hand	L = Left Hand	U = Unassembled
-------	----------------	---------------	-----------------

POINT STYLE	Other styles available including long extensions				
-------------	--	--	--	--	--



### ORDERING INFORMATION

