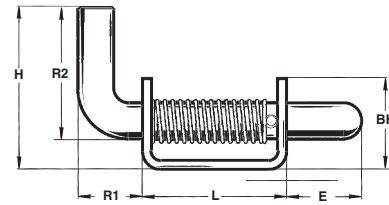
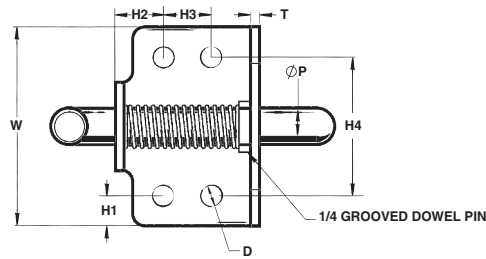
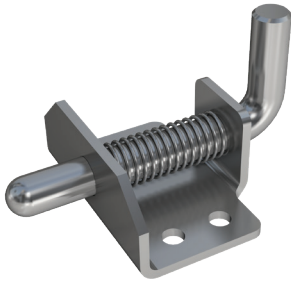


Heavy Duty Spring Latch Series 788



The 788 Series Spring Latch is the strongest, most rugged latch in Paneloc's product line, with a 3/4" diameter pin, easy-to-grip handle and closed knuckle for added durability and strength.

The body includes four mounting holes for secure installation. This part is ideally suited for heavy-duty use on trucks, railcars, and trailer bodies.

PIN			BODY			
P	Pin Diameter	.750	L	Length	3.00	
*	E	Extension	1.562	W	Width	4.125
	R1	Handle Extension	1.312	T	Material Thickness	.187
	R2	Handle Extension	2.750	H	Height	3.375
				BH	Body Height	1.875
				H1	Hole Location	.621
				H2	Hole Location	1.00
				H3	Hole Location	1.00
				H4	Hole Location	2.875
				D	Hole Diameter	.437

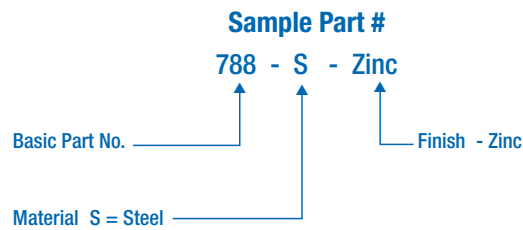
MATERIAL

Designation S = Steel

FINISH

Available in plain steel, or with zinc plating.

ORDERING INFORMATION



*Designates dimensions that can be altered to meet your specifications. Special forms, hole locations and sizes or welding projections are available to your specifications.