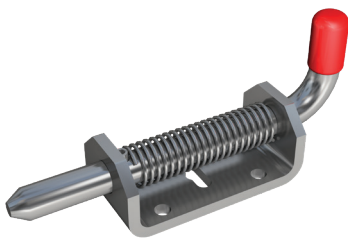
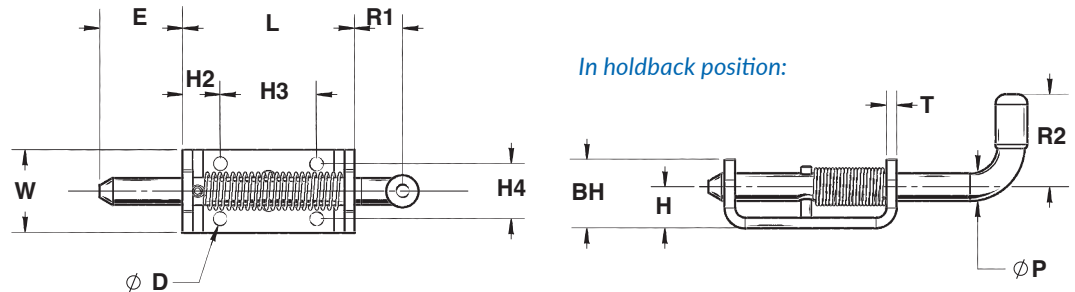


Heavy Duty Spring Latch Series 789



The Paneloc 789 Series Spring Latch features a 1/2" pin with a holdback.

These large rugged latches feature a closed knuckle for added durability and strength, making them well-suited for truck and trailer bodies.



PIN			BODY		
P	Pin Diameter	.500	L	Length	3.12
* E	Extension	1.50	W	Width	1.50
R1	Handle Extension	.870	T	Material Thickness	.187
R2	Handle Extension	1.68	H	Height	.750
			BH	Body Height	1.25
			H2	Hole Location	.690
			H3	Hole Location	1.75
			H4	Hole Location	1.00
			* D	Hole Diameter	.250

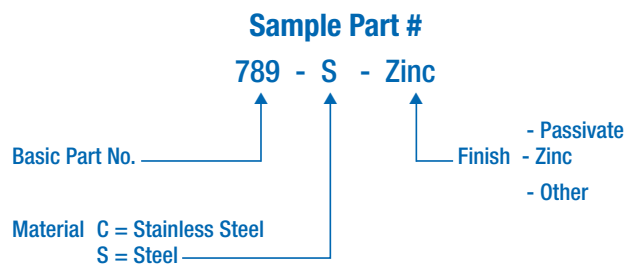
MATERIAL

Readily available in plain steel with zinc plating, though it can also be purchased in stainless.

FINISH

Most commercial finishes are available, including zinc on steel, passivate and electropolishing on stainless steel.

ORDERING INFORMATION



*Designates dimensions that can be altered to meet your specifications.
Special forms, hole sizes or welding projections are available to your specifications.