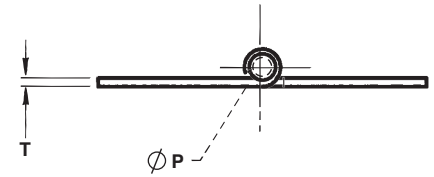
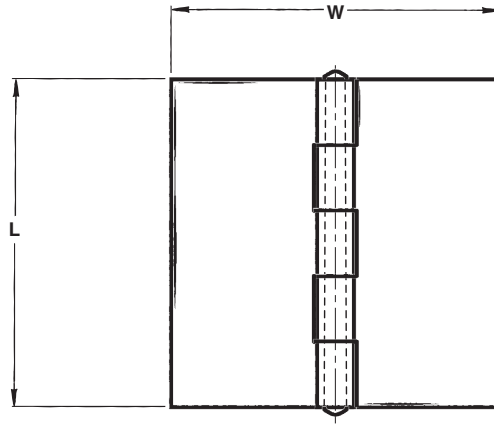
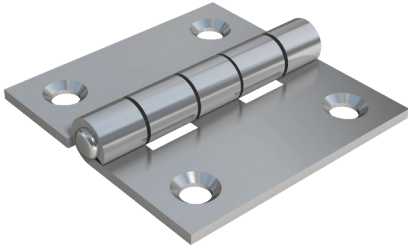


Butt Hinges



Paneloc's butt hinges are available in a broad range of sizes, types and configurations to meet virtually any application's needs.

Our hinges feature a 5-knuckle configuration with a non-removable spun pin for added strength and security, and minimal side and end play.

Most hinges are stocked without holes or with two holes per leaf, and are readily available in steel or stainless steel. Common finishes include black oxide or zinc with clear or yellow chromate on steel; passivate or electropolish for stainless steel, and anodize on aluminum.

Custom piercing, trimming and removable pins can be requested to suit your needs.

PART NUMBER	THICKNESS	LENGTH	WIDTH	PIN DIAMETER
418	.050	1.5	1.5	.125
425	.060	2.0	2.0	.125
500	.062	2.5	2.5	.125
354	.070	3.0	1.5	.156
364	.072	3.0	2.0	.156
498	.080	2.0	2.0	.187
674	.080	2.5	2.5	.187
673	.080	2.5	2.5	.250
693	.078	3.0	3.0	.187
688	.093	3.0	3.0	.250
731	.125	2.5	2.5	.250
691	.125	3.0	3.0	.250